

Models 25SF • 40SF

Fearless All Stainless Steel Gauges

Palmer Fearless Gauges offer Filled Gauge performance without the disadvantages of Liquid Filled.



- Vibration and Pulsation Resistant Readings similar to a Liquid Filled Gauge
- Easy Shipping, Handling, and Storage
- Long Instrument Life
- Low Maintenance
- In Situ Calibration
- Replaceable Crystal
- Accuracy $\pm 1\%$
- No Possibility of Chemical Reactions From Fill Media when Dry

Palmer Fearless All Stainless Steel Gauges are the highest quality instruments available for gas or liquid media. Their rugged construction and watertight bayonet case/ring design is enhanced by Palmer's **Fearless** vibration and pulsation resistant **Dampened Movement**. The results are a Pressure Gauge suitable for demanding applications in all industries.

**IP54
COMPLIANT**

Specifications

Case: AISI 304 Stainless Steel Solid Front in 2-1/2" (63mm) and 4" (100mm) diameter watertight case.

Fill: Dry.

Ring: AISI 304 Stainless Steel Bayonet Bezel Ring.

Window: 3mm Instrument Quality Glass; Laminated Safety Glass and Acrylic optional.

Socket: AISI 316 Stainless Steel Socket and Tube, Argon welded.

Connection: 25SF - 1/4", 40SF - 1/2".

Blow-Out Back: 25mm diameter Perbunan Disc located at rear of case.

Bourdon Tube: AISI 316 Stainless Steel.

Movement: AISI Stainless Steel special Dampened Movement with wear-resistant, self-lubricating Delrin® gears.

Pointer: Balanced black Aluminum, micrometer adjustable.

Dial: White Aluminum with black markings in accordance with ASME B40.1 - 2005.

Range Availability: See matrix at right.

Process Temperature Limits: -67 to 212° (-55 to 100°C).

Ambient Temperature Limits: -67 to 176°F (-55 to 80°C).

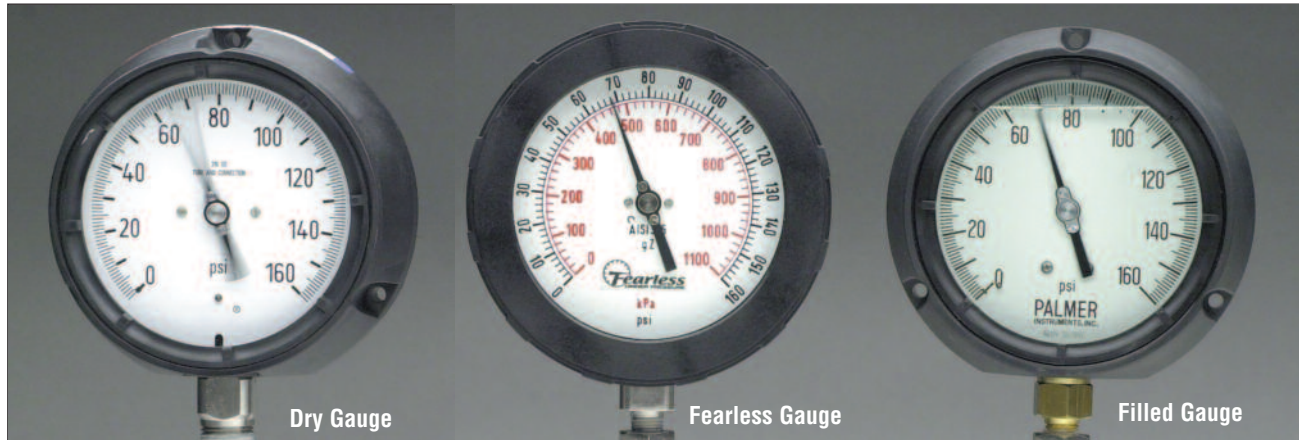
Overpressure Limits: 30% of full scale value.

*Precision instruments from
Palmer offer you the quality
and reliability you rely on
for your process!*



Models 25SF • 40SF

Fearless All Stainless Steel Gauges



Fearless Gauge comparison to a Filled Gauge and a Dry Gauge under identical test conditions. Please note the effects of vibration on the Dry Gauge, as compared to the Fearless Gauge which is vibration and pulsation resistant, similar to a Filled Gauge.



Ordering Guide

1) Case Size

25 2-1/2" (63mm)
40 4" (100mm)

2) Case Material / Style

S Stainless Steel with Bayonet Ring

3) Element Material

F Stainless Steel with Solid Front, Bayonet Bezel Ring

4) Fill

D Dry

5) Mounting

L Stem Mount, Lower Connected
B Stem Mount, Back Connected
U Flush Mount, Back Connected, U Clamp
F Flush Mount, Back Connected, Front Flange
I Surface Mount, Lower Connected, Rear Flange

6) Connection

H 1/2" NPT (40SF only)
Q 1/4" NPT (25SF only)

8) Options

G Safety Glass
G1 Acrylic

7) Range / Scale

PSI Ranges

15# 0-15psi
30# 0-30psi
60# 0-60psi
100# 0-100psi
160# 0-160psi
200# 0-200psi
300# 0-300psi
400# 0-400psi
800# 0-800psi
1000# 0-1000psi
1500# 0-1500psi
2000# 0-2000psi
3000# 0-3000psi
4000# 0-4000psi
5000# 0-5000psi
6000# 0-6000psi
7500# 0-7500psi
10,000# 0-10,000psi
15,000# 0-15,000psi

Compound Ranges

-30" Hg/15# 30"Hg/0-15psi
-30" Hg/30# 30"Hg/0-30psi
-30" Hg/60# 30"Hg/0-60psi
-30" Hg/100# 30"Hg/0-100psi
-30" Hg/160# 30"Hg/0-160psi

Vacuum Range

-30"Hg to 0

Metric Scales

Bar, kg/cm², kPa
Single or Dual Ranges available



Register your product at www.palmerwahl.com/register

Specifications subject to change without notice.

PALMER Wahl
INSTRUMENTATION GROUP
Continuous Innovation Since 1836
ISO 9001:2008 CERTIFIED